

COMPASS ASSESSMENT TEST

STANDARD 8 - 2022

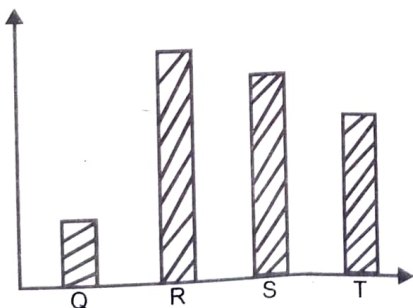
SCIENCE

002

Time 1 Hours 40 min



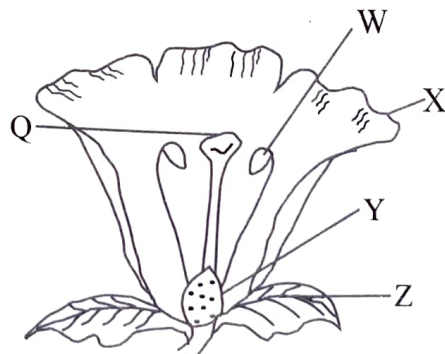
- Which of the following is a function of red blood cells?
A. Fight germs
B. Transport digested food
C. Prevent excessive loss of blood
D. Transport oxygen
- Kidneys excrete three of the following products **except**
A. urea B. salt
C. carbon dioxide D. water
- A child in a certain area had the following signs and symptoms:-
(i) fever
(ii) muscle and joints aches
(iii) skin rash
(iv) abdominal pains
It is possible the child was suffering from
A. typhoid B. malaria
C. bilharzia D. cholera
- A learner ate a chunk of meat. Which digestive juice was the first to digest it?
A. Intestinal juice
B. Saliva juice
C. Gastric juice
D. Hydrochloric acid
- The diagram below shows a composition of gases in the atmosphere.



Which gas is used by plants to make proteins?

- A. Q B. R
C. S D. T

- Three of the following are sea mammals. Which one is **not**?
A. Shark B. Seal
C. Dolphin D. Whale
- The largest component of environment on earth surface is
A. air B. water
C. plants D. soil
- Which of the following is the correct flow of blood in the body?
A. Venacava → Aorta → pulmonary artery → pulmonary vein
B. Pulmonary artery → Aorta → venacava → pulmonary vein
C. Aorta → pulmonary vein → venacava → pulmonary artery
D. Venacava → pulmonary vein → aorta → pulmonary artery
- The gravitational pull of an object is measured in
A. metres B. kilograms
C. newtons D. grammes
- The diagram below shows a flower.

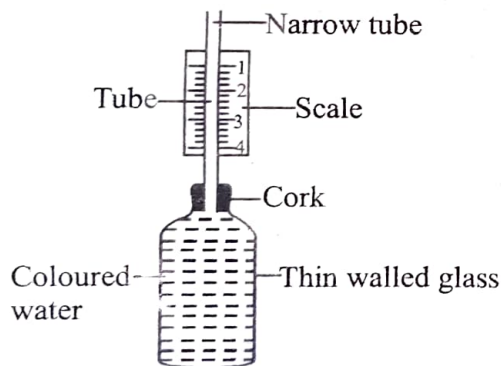


Which part is correctly matched with its function.

- A. Q-attracts pollinators
B. Z-where fertilization happens
C. X-protects flower while young
D. Y - becomes fruit after fertilization

11. Which weather instrument can be used to measure two aspects?
 A. Windvane B. Windsock
 C. Rain gauge D. Thermometer
12. Animals are useful to plants in the process of
 A. Photosynthesis B. Pollination
 C. Transpiration D. Fertilization
13. Fats and oils are sources of
 A. energy giving foods
 B. body building foods
 C. protective foods
 D. proteins and vitamins
14. A human being has how many sets of teeth?
 A. 2 B. 6
 C. 8 D. 32
15. Which characteristic is common to alligator, newt and tilapia
 A. breathe by lungs
 B. have scales
 C. are cold blooded
 D. lay fertilised eggs
16. Which of the following is the brightest planet?
 A. Mercury B. Earth
 C. Jupiter D. Venus

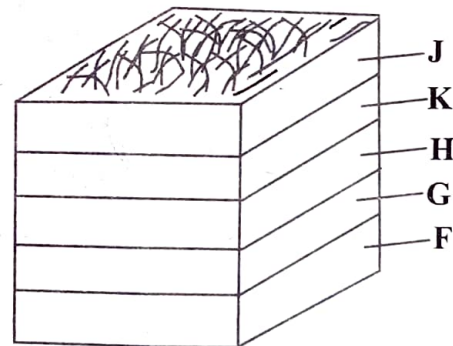
17. Study the diagram below:-



The instrument could **not** work properly since

- A. the water was coloured
 B. the bottle was thin walled
 C. the cork was tight
 D. the scale was not labelled correctly
18. Which of the following is **not** a function of mulching?
 A. To conserve soil moisture
 B. To control pest
 C. To add nutrients in the soil
 D. To discourage growth of weeds

19. When we breathe in
 A. the diaphragm flattens
 B. volume of the chest decreases
 C. ribs move inwards and downwards
 D. the diaphragm becomes dome shaped
20. Which of the following are health effects of drugs?
 A. Rape, impaired judgement
 B. Truancy, accidents
 C. Marital conflict, fits
 D. Death, fits
21. Which of the following is a function of amniotic fluid?
 A. Allows gaseous exchange
 B. Allows movement of waste from the mother
 C. Allows the foetus to move freely
 D. Allows movement of food to the foetus
22. A rainbow is formed when there is
 A. sunlight only
 B. water and air
 C. mirror and water only
 D. sunshine and water droplets
23. The diagram below shows a compost heap

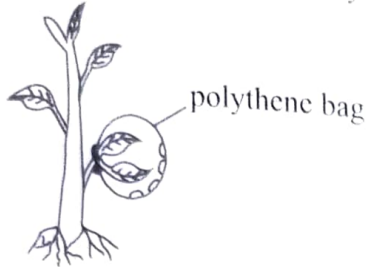


The purpose of adding layer **K** is to

- A. introduce decomposers
 B. add additional nutrients
 C. increase decomposition
 D. act as food to decomposers
24. Gulley erosion can be controlled by
 A. binding gutters on roofs
 B. constructing check dams
 C. planting cover crops
 D. adding manure in the soil
25. The following are sources of calcium **except**
 A. millet B. liver
 C. milk D. daggaa

26. Three of the following are ways of controlling spread of HIV/AIDS in the community **except**
- creating public awareness
 - campaigns through various media
 - conducting mass education
 - being faithful

27. The set up below was done by some learners



The set up was to investigate

- | | |
|------------------|-------------------|
| A. transpiration | B. photosynthesis |
| C. osmosis | D. transpiration |
28. Which of the following is **not** a source of current electricity?
- Dry cells and dynamo
 - Bulb and water dam
 - Solar panel and Geothermal wells
 - Generator and car battery
29. Three of the following are effects of HIV/AIDS to an individual. Which one is **not**?
- increase in school dropout
 - low self esteem
 - lack of strength to work
 - stigmatization
30. The process by which solid changes to liquid is called
- | | |
|----------------|-----------------|
| A. evaporation | B. condensation |
| C. melting | D. freezing |
31. The diagram below shows a phase of the moon.



It is true to say that

- it appears before the new moon
- it is the first phase of the moon
- it appears in the west in the evening
- it is the last phase of the moon

32. Which of the following groups shows non-magnetic materials?

- Cobalt and nickel
- Aluminium and nickel
- Iron and steel
- Alnico and Nickel

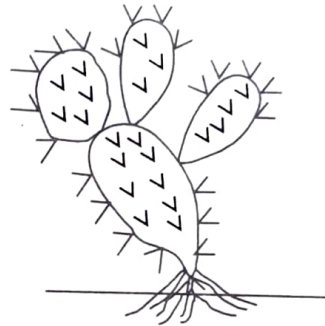
33. Soil capillarity is determined by

- air in the soil
- size of soil particles
- organic matter in the soil
- animals found in the soil

34. Three of the following are straight fertilizers. Which one is **not**?

- | | |
|---------------|--------|
| A. Urea | B. CAN |
| C. Basic slag | D. DAP |

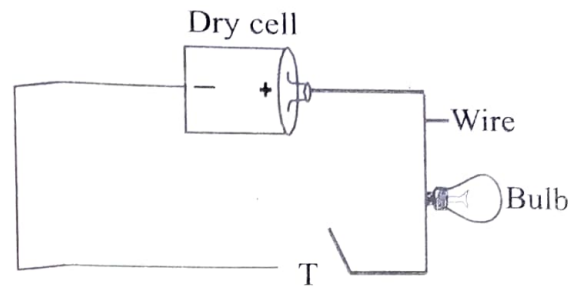
35. Which of the following statements is true about the adaptation of the plant below.



- It has broad leaves
 - It is not a flowering plant
 - It has thin waxy cuticle
 - It makes its food through the stem
36. The **main** problem facing hydrophytes is
- lack of enough oxygen
 - lack of pollination
 - being eaten by water animals
 - being unable to float
37. The following livestock parasites can be controlled by spraying **except**
- | | |
|----------|--------------|
| A. mite | B. tick |
| C. louse | D. tsetsefly |
38. Which of the following is a use of water in the farm?
- Making fountain
 - Mixing chemicals
 - Game fishing
 - Cooling machines

39. A nail sinks in water while wood floats. This is because of difference in their
- A. shape B. weight
C. material D. density
40. Clouds that indicate fine weather also
- A. are dark grey in colour
B. are found high in the sky
C. are found low in the sky
D. indicate heavy rainfall
41. Which of the following is **not** essential for a seed to germinate?
- A. Air and water
B. Warmth and air
C. Light and soil
D. Water and warmth
42. Which of the following groups represents a balanced diet?
- A. Rice, beans, green grams
B. Orange, water, mangoe
C. Beans, milk, garden peas
D. Cabbage, rice, fish
43. A windvane works on the fact that
- A. matter occupies space
B. air expands when heated
C. air has weight
D. air in motion
44. Which of the following will **not** stop breeding of mosquitoes?
- A. Draining stagnant water
B. Sleeping under treated mosquito nets
C. Pouring on stagnant water
D. Clearing bushes in the compound

45. The diagram below shows a simple circuit.



Which materials can be placed at point T for the bulb to light

- A. nail B. thread
C. dry wood D. book
46. Which of the following precautions will maintain simple tools?
- A. Using knife to split firewood
B. painting claw hammer
C. making handle of a jembe smooth
D. using an axe to dig stones
47. Friction can be increased by
- A. using ball bearings
B. roughening the surface
C. using lubricants
D. reducing surfaces in contact
48. Bile juice digests
- A. proteins
B. fats
C. starch
D. vitamins
49. The method of grazing with the highest yield is
- A. strip grazing
B. tethering
C. herding
D. stall feeding
50. Which of the following is **not** a special sound?
- A. Ambulance siren
B. Baby crying
C. Bell
D. Fire engine siren